



Stellar Phoenix Excel Recovery

Version 3.2

Installation Guide

Table of Contents

Overview	1
Getting Started	2
Installation Procedure	3
Order and Register.....	4
User Interface	5
Toolbar.....	6
Menubar	8
Using the Software.....	9
Legal Notices	10
Copyright.....	11
Disclaimer	12
Trademarks.....	13
License Agreement.....	14
Technical Support.....	16
Online Help	16
About Stellar.....	17
Index	19



Overview

Stellar Phoenix Excel Recovery is designed to recover corrupted Microsoft Excel (.xls and .xlsx) files. This software scans all selected Excel files and uses an advanced algorithm to restore Excel files back to their original state. The recovered files can be saved either to their original location on the hard disk, or to any user-specified location.

You can preview the Excel files before saving to a location. You can search for Excel files in folders and drives. You can save all or individual files. In addition, you can save files to original location or specific location.

Key Features of Stellar Phoenix Excel Recovery

- Recovers images, charts and engineering formulas
- Recovers all text, numbers and tables from original Excel sheet
- Preserves formatting when restoring files
- Recovers all embedded functions from the original Excel sheet
- Recovers clip arts
- Supports MS Excel 2000, XP(2002), 2003 and 2007
- Compatible with Windows NT/ 2000/ XP/ 2003/ Vista

Getting Started

Excel Recovery software provides you preview, search and recover options for performing recovery of Excel files. The user interface of Excel Recovery software is easy to use and anyone can use it without any technical knowledge. You can start recovering Microsoft Excel files after installing the Excel Recovery software.

- [Installing Excel Recovery software](#)
- [Order and Register](#)
- [Main User Interface](#)
- [Toolbar](#)
- [Menubar](#)



Installation Procedure

Before installing the software, ensure that your computer meets the minimum system requirements to install Stellar Phoenix Excel Recovery software.

- **Minimum System Requirements**

Processor: Pentium Class

Operating System: Windows NT / 2000 / XP / Vista

Memory: 128 MB recommended

Hard Disk: 10 MB of free space

MS Excel: 2000 / 2002 (XP) / 2003 / 2007

To install the software:

1. Double-click **ser.exe** file to open the Stellar Phoenix Excel Recovery Setup Wizard. Click **Next**.
2. On the Specify Destination Location screen, specify the destination where Stellar Phoenix Excel Recovery software should be installed. Click **Next**.
3. On the Select Start Menu Folder screen, specify the destination where program shortcuts should be stored. Click **Next**.
4. On the Select Additional Tasks screen, check the checkboxes of required icons. Click **Next**.
5. On the Ready to Install screen, click **Install**.
6. Click **Finish** to exit setup wizard.



Order and Register

You can purchase the software online. For price details and to place the order, click [here](#).

On confirmation of order, a pre-paid serial number is sent to you through e-mail that would be required to register the software.

Register Stellar Phoenix Excel Recovery:

After receiving the **Registration Key**, the software can be activated.

To register the software:

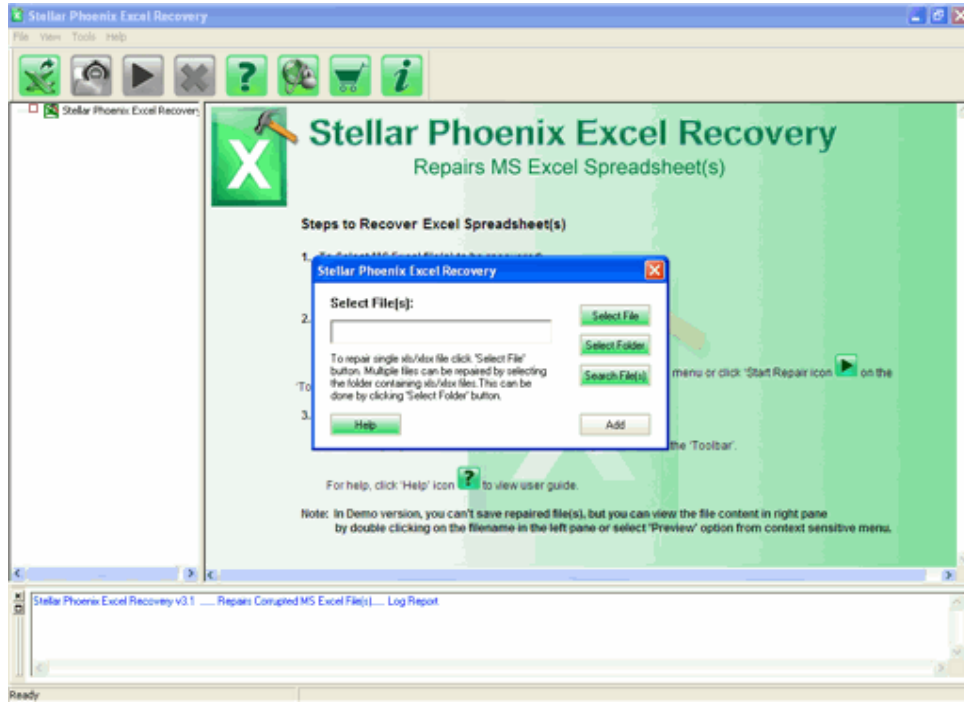
- **Method 1**
 1. Click **Enter Key** button on the reminder window.
 2. Type the name and key (received through e-mail after purchase).
 3. Confirmation message pops up, if the key is valid, click **OK**.

- **Method 2**
 1. Run demo version.
 2. On the Tools menu, Click **Activate**.
 3. Type Name and Key. Click **OK**.



User Interface

The main user interface of Stellar Phoenix Excel Recovery is as shown below.





Toolbar

Toolbar of Stellar Phoenix Excel Recovery consists of the given below tools:

- **Add file to tree view**



Opens Stellar Phoenix Excel Recovery box, which allows you to select Microsoft Excel files from folders and volumes. In addition, you can search files by using this dialog box.

- **Remove File(s) /Folder(s) from tree view**



Removes files that are checked from the tree

- **Start Repair**



Starts recovering files

- **Stop**



Stops an ongoing repairing process

- **Stellar Phoenix Excel Recovery Help**



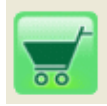
Opens help manual of the software

- **Updates**



Download latest updates of the software

- **Purchase**



Shows links from where you can buy the software

- **About Stellar Phoenix Excel Recovery**



Shows general information about the software



Menubar

These are the menus and items in the Stellar Phoenix Excel Recovery software.

- **File**
 - **Add File to Tree View:** to add Excel files to the tree view
 - **Remove from Tree:** to remove selected files from the tree view
 - **Start Repair:** to start the repairing process
 - **Stop:** stop a process
 - **Exit:** to quit the application
- **View**
 - **Toolbar:** Show/Hide the toolbar
 - **Status bar:** Show/Hide the Status bar
 - **Message bar:** Show/Hide the Message bar
- **Tools**
 - **Save Log:** To save the log information
 - **Clear Log:** To clear the log information
- **Help**
 - **Stellar Phoenix Excel Recovery help:** Opens the user guide
 - **Purchase Stellar Phoenix Excel Recovery Online:** Purchase details of the product
 - **Activate Stellar Phoenix Excel Recovery:** Purchase details of the product
 - **View support section:** Opens Stellar support section webpage
 - **Visit knowledge base:** Opens knowledge base article webpage
 - **Submit support ticket:** Opens the login page, to submit ticket
 - **Updates:** To open update wizard for live updates
 - **About Stellar Phoenix Excel Recovery:** Generic information about the product

Using the Software

Stellar Phoenix Excel Recovery software repairs and restores MS Excel files corrupted due to virus attack, software malfunctioning or unexpected system shut down. It can recover single or individual Excel files.

- **Repairing Excel files**

Stellar Phoenix Excel Recovery recovers Microsoft Excel files and allows you to save to your preferred location. You can recover individual or multiple files by using Excel Recovery.

- **Adding files**

You can add individual files or multiple files in the Excel Recovery software. In addition, you can specify a folder or a volume as a folder such that all Excel files can be added from that folder.

- **Searching files**

You can search for Microsoft Excel files in your computer by using search option of the software. In case, you are unaware of the exact location of required file you can search the file easily.

- **Viewing preview**

Stellar Phoenix Excel Recovery shows preview of corrupted Excel files that helps you to evaluate files before repairing. If you want to preview a file, double-click on the required file in the tree view.

- **Viewing log**

Log window shows the progress of the current process. The log window displays messages such as indicating the beginning of the process, end of the process, name of the corrupted file.



Legal Notices

[Copyright](#)

[Disclaimer](#)

[Trademarks](#)

[License Agreement](#)



Copyright

Stellar Phoenix Excel Recovery software, accompanied user manual and documentation are copyright of Stellar Information Systems Ltd., with all rights reserved. Under the copyright laws, this user manual cannot be reproduced in any form without the prior written permission of Stellar Information Systems Ltd. No Patent Liability is assumed, however, with respect to the use of the information contained herein.

Copyright © 1995-2009 by Stellar Information Systems Ltd. INDIA



Disclaimer

The Information contained in this manual, including but not limited to any product specifications, is subject to change without notice.

STELLAR INFORMATION SYSTEMS LTD PROVIDES NO WARRANTY WITH REGARD TO THIS MANUAL OR ANY OTHER INFORMATION CONTAINED HEREIN AND HEREBY EXPRESSLY DISCLAIMS ANY IMPLIED WARRANTIES OF MERCHANTABILITY OR FITNESS FOR ANY PARTICULAR PURPOSE WITH REGARD TO ANY OF THE FOREGOING STELLAR INFORMATION SYSTEMS LTD ASSUMES NO LIABILITY FOR ANY DAMAGES INCURRED DIRECTLY OR INDIRECTLY FROM ANY TECHNICAL OR TYPOGRAPHICAL ERRORS OR OMISSIONS CONTAINED HEREIN OR FOR DISCREPANCIES BETWEEN THE PRODUCT AND THE MANUAL. IN NO EVENT SHALL STELLAR INFORMATION SYSTEMS LTD, BE LIABLE FOR ANY INCIDENTAL, CONSEQUENTIAL SPECIAL, OR EXEMPLARY DAMAGES, WHETHER BASED ON TORT, CONTRACT OR OTHERWISE, ARISING OUT OF OR IN CONNECTION WITH THIS MANUAL OR ANY OTHER INFORMATION CONTAINED HEREIN OR THE USE THEREOF.



Trademarks

Stellar Phoenix Excel Recovery® is a registered trademark of Stellar Information Systems Ltd.

Windows 2000®, 2003®, XP® and Windows Vista® are registered trademarks of Microsoft® Corporation Inc.

All Trademarks Acknowledged.

All other brands and product names are trademarks or registered trademarks of their respective companies.



License Agreement

Stellar Phoenix Excel Recovery

Copyright © 1995-2009 by Stellar Information Systems Ltd. INDIA

www.stellarinfo.com

All rights reserved.

All product names mentioned herein are the trademarks of their respective owners.

This license applies to the standard-licensed version of Stellar Phoenix Excel Recovery.

Your Agreement to this License

You should carefully read the following terms and conditions before using, installing or distributing this software, unless you have a different license agreement signed by Stellar Information Systems Ltd.

If you do not agree to all of the terms and conditions of this License then do not copy, install, distribute or use any copy of Stellar Phoenix Excel Recovery with which this License is included, you may return the complete package unused without requesting an activation key within 30 days after purchase for a full refund of your payment.

The terms and conditions of this License describe the permitted use and users of each Licensed Copy of Stellar Phoenix Excel Recovery. For purposes of this License, if you have a valid single-user license, you have the right to use a single Licensed Copy of Stellar Phoenix Excel Recovery. If you or your organization has a valid multi-user license, then you or your organization has the right to use up to a number of Licensed Copies of Stellar Phoenix Excel Recovery equal to the number of copies indicated in the documents issued by Stellar when granting the license.

Scope of License

Each Licensed Copy of Stellar Phoenix Excel Recovery may either be used by a single person or used non-simultaneously by multiple people who use the software personally installed on a single workstation. This is not a concurrent use license.

All rights of any kind in Stellar Phoenix Excel Recovery, which are not expressly granted in this license, are entirely and exclusively reserved to and by Stellar Information Systems Ltd. You may not rent, lease, modify, translate, reverse engineer, decompile, disassemble or create derivative works based on Stellar Phoenix Excel Recovery nor permit anyone else to do so. You may not make access to Stellar Phoenix Excel Recovery available to others in connection with a service bureau, application service provider or similar business nor permit anyone else to do so.

Warranty Disclaimers and Liability Limitations.

Stellar Phoenix Excel Recovery and all accompanying software, files, data and materials are distributed and provided AS IS and with no warranties of any kind, whether expressed or implied. In particular, there is no warranty for the quality of data recovered. You acknowledge that good data processing procedure dictates that any program including

Stellar Phoenix Excel Recovery must be thoroughly tested with non-critical data before there is any reliance on it and you hereby assume the entire risk of all use of the copies of Stellar Phoenix Excel Recovery covered by this License. This disclaimer of warranty constitutes an essential part of this License.

In addition, in no event does Stellar authorize you or anyone else to use Stellar Phoenix Excel Recovery in applications or systems where its failure to perform can reasonably be expected to result in a significant physical injury or in loss of life. Any such use is entirely at your own risk and you agree to hold Stellar harmless from any and all claims or losses relating to such unauthorized use.

General

This License is the complete statement of the agreement between the parties on the subject matter and merges and supersedes all other or prior understandings, purchase orders, agreements and arrangements. This License shall be governed by the laws of the State of Delhi, India. Exclusive jurisdiction and venue for all matters relating to this License shall be in courts and for a located in the State of Delhi, India and you consent to such jurisdiction and venue. There are no third party beneficiaries of any promises, obligations or representations made by Stellar herein. Any waiver by Stellar of any violation of this License by you shall not constitute nor contribute to a waiver by Stellar of any other or future violation of the same provision or any other provision of this License.

Copyright ©1995-2009 by Stellar Information Systems Ltd. All rights reserved.



Technical Support

Our Technical Support professionals will give solutions of all your queries related to Stellar Products.

You can either Call Us or Go Online to our support section
<http://stellarinfo.com/esupport/users/kb.php>

Support Helpline

Monday – Friday [24 Hrs. a day]

USA (Toll free - Pre Sales Queries)	1-866-554-2512
USA (Post Sales Queries)	1-315-220-6245
UK (Europe)	+44-207-993-2293
Germany	+49-180-110-105-0051
Worldwide	+91-921-395-5509
Skype Id	stellarsupport
Email Order	orders@stellarinfo.com

Online Help

- [Chat Live](#) with an Online technician
- Search in our extensive [Knowledge Base](#)
- [Submit Ticket](#) (If our Knowledge Base does not answer your question)
- Login and view [Ticket Status](#) (If you already have a valid Ticket with you)
- [Download Documents](#) on Product Usage (For Registered members only, i.e, user with login ID. If you are an unregistered user, please visit <http://stellarinfo.com/esupport/users/login.php> to create login ID)



About Stellar

Stellar Information Systems Ltd. is a trusted name in the field of Data Recovery and Data Protection Software for more than a decade.

We provide the widest range of Data Recovery Products. Our range includes Data Recovery Software for almost all Operating Systems and File Systems.

Product line:

Data Recovery

A widest range of data recovery software that helps you recover your valued data lost after accidental format, virus problems, software malfunction, file/directory deletion, or even sabotage!. [More Info >>](#)

File Recovery

The most comprehensive range of file undelete and unerase software for Windows and MS office repair tools. [More Info >>](#)

Email Recovery

A wide range of mail recovery, mail repair and mail conversion applications for MS Outlook, MS Outlook Express and MS Exchange useful in instances of data loss due to damages and corruption of Email. [More Info >>](#)

Data Protection

A wide range of Prevent Data Loss, Data backup and Hard Drive Monitoring Applications to ensure complete data protection against hard drive crash. [More Info >>](#)

Data Sanitization

Data cleanup and file eraser utility can delete selected folders, groups of files, entire logical drives, System Traces & Internet traces. Once the data have been removed using Stellar Wipe - Data File eraser utility, it is beyond recovery limits of any Data Recovery Software or utility. [More Info >>](#)

For more information about us, please visit www.stellarinfo.com

Index

A

Add file 8, 10

Add individual 10

Advance Repair 8, 10

C

Clear Log 8, 10

D

delete file 10

F

file search 10

Files 10

Filtered Text 10

L

Log Report 10

M

Machine-readable 10

Menubar 8

P

Pre-paid 4

Processor 3

R

recover file 10

Register 4

Registration Key 4

remove file	10
repair file	10
S	
save file.....	10
Save Log.....	10
search file	10
Select Drive	10
select file.....	10
Start Repair.....	8
Status bar	8
Subfolders.....	10
System.....	3
Operating	3
T	
Toolbar.....	8
Tree	10
Tree View.....	8, 10
V	
Vista.....	1, 3
W	
Windows NT	3
X	
XP	3